

## Customer focused development

- spindles + slides
- plan-tables + instruments
- machines
- micro cutting technology



## Rotary bearings model series RMT

### Performance features

- Universal area of application for radial and planess accuracies
- Very high load bearing capacity
- Good emergency running characteristics
- Available in a variety of sizes



### High-performance rotary bearing, with drive and control unit as an option!

The RMT model series rotary bearing from

ess Mikromechnik GmbH completes the company's range of high-performance and high-precision bearings.

It does not only meet the most stringent requirements with respect to radial and lateral run-out accuracy but the tilt load has also been improved

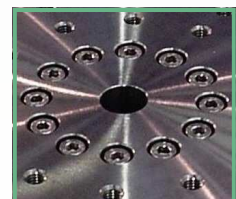
ess Mikromechnik GmbH boasts a tradition of outstanding achievement.

Therefore this high-performance bearing is also available with the appropriate drive and

Gewerbstraße 10  
D-78333 Stockach-Windegg

Tel. +49 7771-8701-0  
Fax +49 7771-8701-22

info@ess-mikromechnik.de  
www.ess-mikromechnik.de

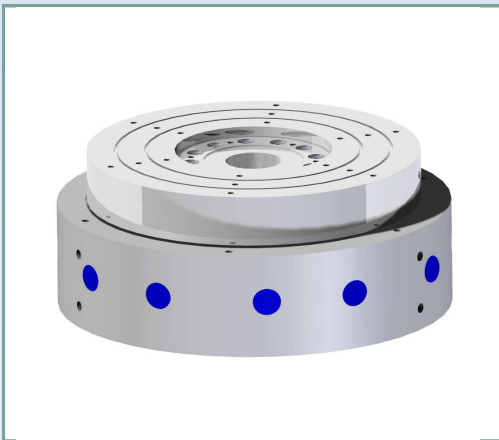


## Technical data

**Rotary measuring table**  
**RMT 075 / 100 / 130**  
**ess Mikromechanik GmbH**

<b>Measuring length</b>	360°
<b>Measuring bearing</b>	air bearing
<b>Operating pressure</b>	Max. 5 bar
<b>Working temperature</b>	15 till 35°C
<b>Storage temperature</b>	2 till 40°C

## Model variations



### Basic unit RMT

	075	100	130
Runout accuracy	0,05 µm	0,05 µm	0,05 µm
Planess accuracy	0,03 µm	0,03 µm	0,03 µm
Wobble error	1,8 µrad	1,7r µrad	1,7 µrad

The RMT model series rotary tables provide the user with a new high-performance bearing. Due to constant development work, it has been possible to develop a new rotary air bearing which completes the previously available range.

In addition to the standard radial and lateral run-out deviations of less than 0.05µm,

the new bearing type also features an improvement of the max. tilt load of more than 300%.

This new type of bearing also features the proven "cyclic error compensation system" which ensures that errors which occur periodically are compensated for to a large degree due to the actual design.

In conjunction with the drive and control unit from the AES model series, the user is in possession of a high-performance, top-quality complete system.

**High-performance bearing**  
**with cyclic error compensation!**